





SERVO-MATİK

Established in 1984, SERVO-MATİK LTD.ŞTİ. has been providing services in Turkey electricity marketing so far. Adopted quality as a principle, our company has been generating electrical equipments regulating city voltages and electrical devices protecting other electrical equipments from this variable voltage. From the day when the Servomatik had been established; it adopted offering “different and quality products” as a principle. We serve 40 % of regulator marketing in Turkey with our 25 technical and administrative staff. We are able to generate 4000 devices a year which are between 1kVA and 3000 kVA. Acting in conscious of high level customer satisfaction and environmental awareness, ServoMatik Regulator has been successful due to its “innovation, sale force and support services”. ServoMatik Regulator has provided stability in “Total Quality Policy”. All processes within our organization have been integrated with the management system and a self-controllable structure has been developed. This structure enhances our “goals”. In addition to full automatic servo voltage regulators, we also generate REDRESSOR, TRANSFORMATOR, NONSTOP POWER PLANT and PRIVATE MICRO SERVO REGULATOR. Our quality products have been exported to such countries as AZERBAIJAN, TURKMENISTAN, KAZAKHSTAN, SYRIA, IRAQ, PERSIA, GERMANY, KOSOVO, ALBANIA, ALGERIA, EGYPT, KENYA, ITALY, FRANCE, UNITED STATES OF AMERICA, CANADA, GREECE, CYPRUS, AFGHANISTAN, RUSSIA, ARMENIA, MOROCCO, PALESTINE, GEORGIA, CROATIA, SPAIN, KYRGYZSTAN, COLOMBIA, LEBANON, DUBAI, UZBEKISTAN, POLAND, PAKISTAN, ROMANIA, SAUDI ARABIA, SYRIA, TURKMENISTAN and JUGOSLAVIA. We aimed at improving our quality and being the leader in regulator marketing in our new 1500 m2 closed factory we established located in YAKUPLU due toEE increasing demand for our products.

STATIC REGULATOR



Input Voltage Regulator Range Max	90/320 V AC
Output Voltage Regulator Sensitivity	Up to 0,5 % with regard to material to be used and adjustment field
Regulator System	Micro processor controller thyristor unit
Voltage Regulating Speed	500V/Sn.
Respond Time	20 ms.
Mechanic Part	None
Excessive Switch Guard	Inactive fuse electronic excessive switch guard for both input and output (Standard)
Excessive Voltage Guard	Low/High voltage guard (Standard)
Excessive Heat Guard	Thermal and electronic guard is active for excessive heat. In case of excessive heat, output will be turned off and when it returns to normal output will be activated automatically.
Indicator System	Input voltage, output voltage, output frequency, regulator status and failure details, excessive load warning, excessive heat warning, input failure warning, output failure warning on LCD indicator
Output Filter	RFI-EMI filter
Cooling	The ventilators are regularly cooled depending on heat for each phase (standard)
Weight	40 % more slight by semi conductive technology
Size	50 % smaller when compared to servo by compact and ergonomic design
Maintenance	Maintenance is not required as no movable part exists
Working Environment	Can not be used in mild and vibrant settings
Spare Part	Spare part support for at least 10 years to be provided by our company
Repair	Expertise is not required as any calibration and adjustment is not required after any change of spare Can be repaired by remote management parts.

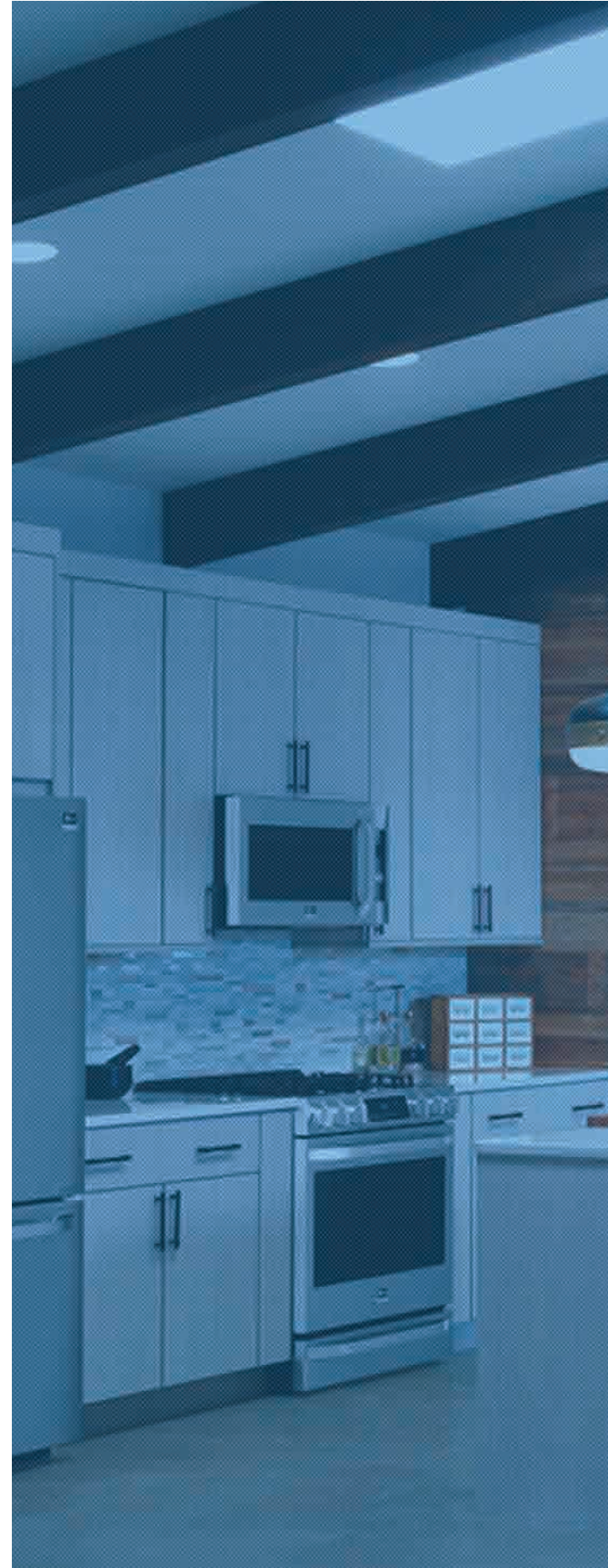
SERVO REGULATOR

100/280 V AC	Input Voltage Regulator Range Max
± 2%	Output Voltage Regulator Sensitivity
Micro processor controller mechanic variac and engine system	Regulator System
20V/Sn. - 80V/Sn.	Voltage Regulating Speed
300 ms.	Respond Time
Exist	Mechanic Part
Inactive electronic excessive switch guard for both input and output (Optional)	Excessive Switch Guard
Low / High voltage guard (Optional)	Excessive Voltage Guard
Optional	Excessive Heat Guard
None	Indicator System
None	Input-Output Filter
The ventilators are automatically cooled depending on heat for each phase(Optional)	Cooling
It is weighty due to variac system.	Weight
It is bigger due to variac system.	Size
It is possible for movable parts to be eroded. Maintenance is required in specific periods.	Maintenance
Can not be used in mild and vibrant settings	Working Environment
Spare part support to be provided by our company for at least 10 years	Spare Part
Expertise is not required as any calibration and adjustment is not required after any change of spare parts. Can be repaired by remote management.	Repair











MONOPHASE STATIC REGULATOR

Servo-Matik monophase static regulators are manufactured by high-technology and have high regulation speed and full protection system. In case of unbalanced grid voltage, they provide safe and stable output voltage in very sensitive devices. When compared to other regulators, their leading advantage is high-speed respond in case of sudden voltage fluctuation. They are manufactured in a capacity to work smooth even in case of full load and extreme change of voltage. They are long-lasting devices and do not require maintenance as there is not any movable part in them.

1kva - 80kva

- 100 % compatibility with all monophase devices
- Feed running at 65 V AC
- High corrective range (45 V - 300 V AC)
- 200ms voltage corrective speed
- Control and guard unit by microprocessor controller
- Accurate static mold by Thyristor and Smpts technology
- Excessive switch guard and tension guard (Standard)
- Short circuit guard (Standard)
- Accurate heat control and heat guard (Standard)
- Required cooling by smart ventilator (Standard)
- Manual By-Pass and Automatic By-Pass
- High efficiency and silent running
- 1 adet 4x20 LCD (Standard)
- All faults, running hours, highest lowest detected voltage, highest loaded switch, instant heat and highest visible heat, thyristor number, level number, software date and number, guarantee number which are saved in LCD automatically
- Quality, ergonomic mold, small sizes, easily carrying
- ISO 9001:2008

3 YEAR
WARRANTY
GUARANTEED



ENTRANCE PARAMETERS

Entrance Connection Phase Number	1 FAZ	
Continuous Running Hours with Full Load 0...105%	Devamlı 7/24	
Possible Voltage Range on Entry	>0v.....450v<	
Fees Voltage Running Range	>65v.....290<	
Feed Guarding Voltage Range	<45v.....300>	
Entry Corrective Range	>90v.....290v<	
Running Frequency	>47v.....63v<	50 Hz
Corrective Speed = Second / Frequency	Frekans = 50 = 20ms Frekans = 60 = 16,66ms	
Switching Thristor Controller	Static Regulator	

ENVIRONMENTAL CONDITIONS

Number of Entry Connection Phase	0 > -40 °C <+55 °C	
Relative Humidity	< 96%	Uncondensed
Running Highness	<3.000 meters	3 km
Guard Class	IP21	

LCD INDICATOR

Entry voltage, output load rate,regulator status and failure reporting, excessive load warning, excessive heat warning, entry failure warning, output failure warning, maximum and minimum entry voltage after the last start and power, countdown	0 > -40 °C < +55 °C	Exist
--	---------------------	-------

INDICATOR PAGING AND INFORMATION TRACE

Software version,software date,static level number,module number,guarantee number, fault trace,fault number,fault reason,total running hours.	To select my menu button	Exist
Adjustment of All Parameters	By menu button	Exist
Minimum Faultless Running Hours	61-320 saat	
Fault Trace Time by Circle Method	65-535 times	
Fault Trace Hours by Circle Method	7 years	
Memory of Faults in EEPROM	1024 byte	Exist

OUTPUT PARAMETERS

All kind of loads		Yes
Permitted Excessive Load <400%	10 ms	
Permitted Excessive Load <200%	1000 ms	
Permitted Excessive Load <150%	60 sn	1 min
Permitted Excessive Load <125%	180 sn	3 mins
Continuous Load <150%	< 7/24	10 kva / 165v =60,6 Amp.
Max with Inflow	Kva / min. input volt	
Crest Factor	5:1	9 level
Static Level Number	3x3 = 6 Thyristor	16 level
Static Level Number	4x4 = 8 Thyristor	25 level
Static Level Number	5x5 =10 Thyristor	36 level
Static Level Number	6x6 =12 Thyristor	1%.....10%
Output Voltage Tolerance 1%.....10%	Either input or output tolerance must be chosen considering requirement.	
Output Wave Shape	Pure Sine	
Power Factor (cos f)	0,8	Menu 0.....300sn
Output Activating Time	6 sn	
Yield Under Load	96%	
Switch Guard	Protecting by fuse on input and output,electronic excessive switch guard by micropocessor	3
Low Voltage Guard	Output Voltage -10%	200 _B - 10% = 198 _v
High Voltage Guard	Output Voltage +10%	220 _B - 10% = 242 _B
Acoustic Noise (in 1 m distance)	< -55db	Exist
Cooling System	Smart ventilator system +55 °C	Exist
Switching Thyristor Guard Heat	> +80 °C	Exist
Transferring Load to By-Pass by Pole Shifter V-Automat		Exist
Automatic By-Pass		
Input and Output Connection	By Connetor in Suitable Capacity	

UTILIZATION AREAS

CNC Stands - Continuous Power Supply Sources - Medical Devices - Telecommunication Devices - Automation - Equipment - Wood Process Machines - Injection Machines - Press Machines - Radio Transmitters - Television Transmitters - Textile Machines - Design Machines - Navigate Equipment - Photograph Printing Machines - Elevators - Card Pass System - Laboratory Devices - Dentistry-Equipment - Laser Devices - Telephone Central Offices - Burglar Alarm Systems - Jewellery Devices - Technical Devices - Air Conditions - Motorized Shutters - Computer Systems - Lightning Units - Central Heating Boilers - Packig Machines - Leather Process Devices - Mototrized Machines - Market Equipment - Heating and Cooling System - Fire Security - Staff Attendance Control Systems - Household Electrical Appliances





THREE PHASE STATIC REGULATOR

Servo-Matik Three phase static regulators are manufactured by advanced technology and they have high regulation speed with full guarding system. In case networking voltage is low, they provide safe and stable output tension in very sensitive devices. When compared to other devices, their best advantage is high speed reaction in case of sudden voltage fluctuations. They are manufactured to be able to run without any problem even with full load and when tension changes excessively. They are long lasting devices and do not require any maintenance as they do not include any movable part in them.

3kva – 3200kva

- 100 % Compatibility for all three phase devices
- Feed running for each phases at 65 V AC
- High correction range (75 V - 520 V AC)
- 20ms voltage correction speed
- Controlling and guard unit by microprocessor controller
- Actual static mold by Thyristor and Smpts technology
- Excessive switch guard and tension guard (Standard)
- Short circuit guard (Standard)
- Actual heat control and heat guard (Standard)
- Required cooling by smart ventilator (Standard)
- Manual By - Pass and Automatic By - Pass
- High efficiency and silent running
- 3 adet 4x20 LCD (Standard)
- All faults, running time, highest-lowest visible voltage, highest and lowest loaded flow, instant heat and highest visible heat, thyristor number, level number, software date and number guarantee number which are automatically loaded in LDC
- Quality, ergonomic mold, small sizes, easily carrying
- ISO 9001:2008

3 YEAR
WARRANTY
GUARANTEED



INPUT PARAMETERS

<i>Input Connection Phase Number</i>	3+1 PHASE	
<i>Continuous Running Time with Full Load</i>	7/24 Continuous	
<i>Possible Voltage Range on Input</i>	>0v.....450v<	PHASE-NEUTRAL
<i>Feeding Voltage Running Range</i>	>65v.....290<	PHASE-NEUTRAL
<i>Feeding Voltage Running Range</i>	<45v.....300>	PHASE-NEUTRAL
<i>Input Correction Range</i>	>90v.....290v<	
<i>Running Frequency</i>	>47v.....63v<	50 Hz
<i>Correction Speed = Second / Frequency</i>	Frequency = 50 = 20ms Frequency = 60 = 16,66ms	
<i>Switching Thristor Control</i>	Static Regulator	

ENVIRONMENTAL CONDITIONS

<i>Input Connection Phase Number</i>	0 > -40 °C <+55 °C	
<i>Relative Humidity</i>	< 96%	Uncondensed
<i>Running Height</i>	<3.000 meters	3 km
<i>Guard Class</i>	IP21	

LCD INDICATOR

<i>Input Voltage,output load percentage, regulator status and fault details, excessive load warning,excessive heat warning, input fault warning,output fault warning, maximum and minimum input voltage and flow after last start, countdown time, multi display</i>	0 > -40 °C < +55 °C	3
--	----------------------------------	----------

INDICATOR PAGING AND INFORMATION TRACE

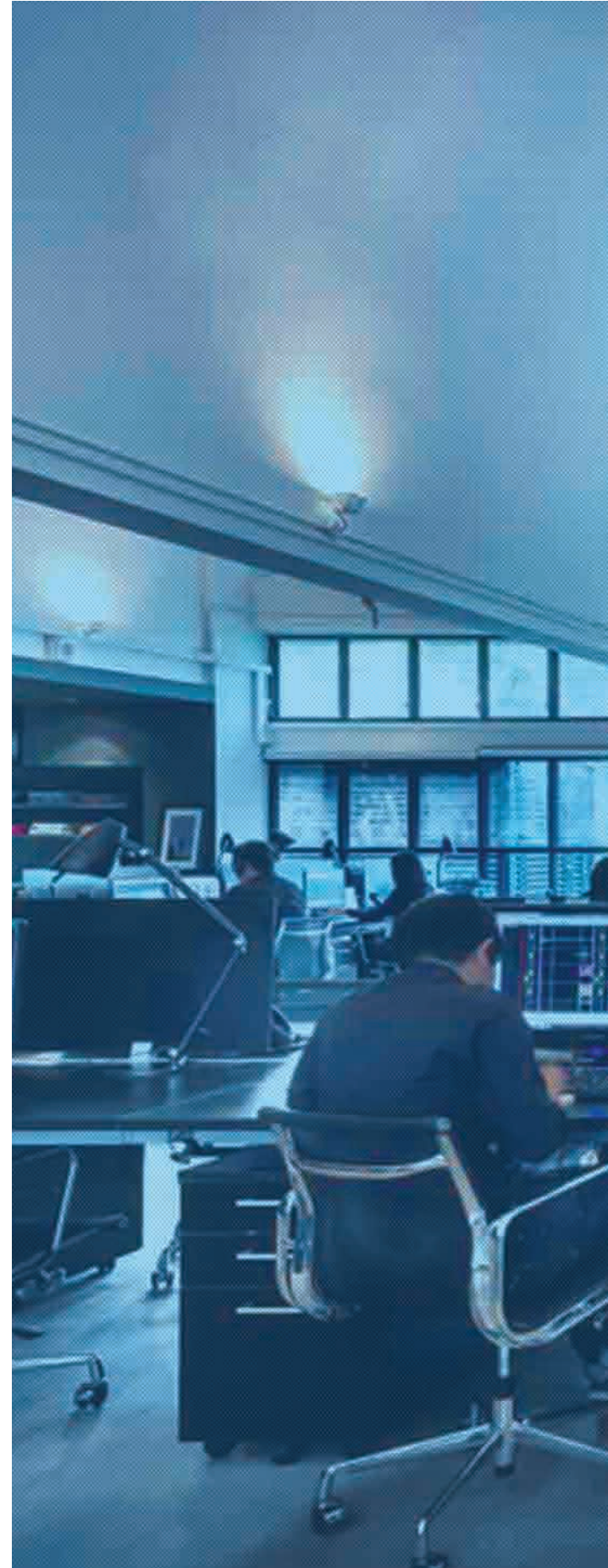
<i>Software version,software date,static level number,module number,guarantee number,fault trace,fault number,fault reason, total running hours</i>	To Select by Menu Button	Exist
<i>Adjusting All Parameters</i>	Menü Button	Exist
<i>Minimum Faultless Running Time</i>	61 320 hours	
<i>Fault Trace Number by Circle Method</i>	65 535 number	
<i>Fault Trace Time by Circle Method</i>	7 years	
<i>Fault Memories in EEPROM</i>	1024 byte	Exist

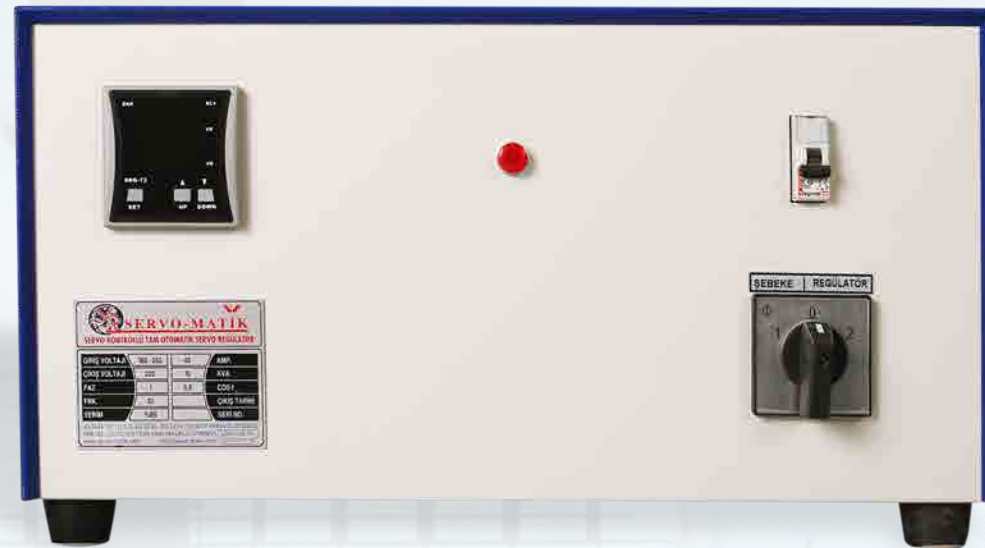
OUTPUT PARAMETERS

All kind of Loads		Yes
Permitted Excessive Load <400%	10 ms	
Permitted Excessive Load <200%	1000 ms	
Permitted Excessive Load <150%	60 sn	1 min
Permitted Excessive Load <125%	180 sn	3 mins
Continuous Load <105%	< 7/24	
Max Input Flow by Ampere	Kva / min. input volt	10 kva / 165v =60,6 Amp.
Crest Factor	5:1	
Static Level Number	3x3 = 6 Thyristor	9 level
Static Level Number	4x4 = 8 Thyristor	16 level
Static Level Number	5x5 =10 Thyristor	25 level
Static Level Number	6x6 =12 Thyristor	36 level
Output Voltage Tolerance 1%.....10%	Either input or output tolerance must be chosen considering requirement.	1%.....10%
Output wave type	Pure Sine	
Power Factor (cos f)	0,8	
Output Activating Time	6 sn	Menu 0.....300sc
Yield Under Load	96%	
Switch Guard	Guard by fuse on input and output,electronic excessive switch guard by microprocessor	3
Guard on Low Volt	Output Voltage -10%	200 _B - 10% = 198 _v
Guard on High Volt	Output Voltage +10%	220 _B - 10% = 242 _B
Acoustic Noise (in 1m distance)	< -55db	
Cooling System	Smart Ventilator System +55 °C	Exist
Switching Thyristor Guard Heat	> +80 °C	Exist
Transferring Load to By-Pass with Pole Shifter V-Automat		Exist
Automatic By-Pass		Exist
Output and Input Connection	By connector in suitable capacity	

UTILIZATION AREAS

CNC Stands - Continuous Power Supply Sources - Medical Devices - Telecommunication Devices - Automation - Equipment - Wood Process Machines - Injection Machines - Press Machines - Radio Transmitters - Television Transmitters - Textile Machines - Design Machines - Navigate Equipment - Photograph Printing Machines - Elevators - Card Pass System - Laboratory Devices - Dentistry-Equipment - Laser Devices - Telephone Central Offices - Burglar Alarm Systems - Jewellery Devices - Technical Devices - Air Conditions - Motorized Shutters - Computer Systems - Lightning Units - Central Heating Boilers - Packig Machines - Leather Process Devices - Mototrized Machines - Market Equipment - Heating and Cooling System - Fire Security - Staff Attendance Control Systems - Household Electrical Appliances





MONOPHASE SERVO REGULATOR

ServoMatik monophase regulators are automatic regulators which regulate your network voltage by variac, engine and control card. In case your network voltage is unstable and unsecured, they provide secured and stable output tension. They are manufactured to run without any problem even with full load and when tension changes. They demonstrate input and output on digital screen and also this screen is a control card and therefore allow users to change it on card in case of any problem.

1kva – 50kva

- 100 % Compatibility for all three phase devices
- Feed running for each phases at 65 V AC
- High correction range (min 100 V AV-max 300 V AC)
- 90 V/sc voltage correction speed
- Micro processor control
- Excessive switch guard and tension guard (Optional)
- Short circuit guard (Optional)
- Manual By-Pass and Automatic By-Pass
- Smart Ventilator (Optional)
- Semi-Segment Display input-output and settings menu
- High efficiency
- Quality, ergonomic mold, easilty carrying
- Minimum risk of fault
- ISO 9001:2008

3 YEAR
WARRANTY
GUARANTEED



INPUT PARAMETERS

<i>Input Connection Phase Number</i>	<i>1 Phase</i>
<i>Input Voltage Correction Range</i>	<i>Min. 110 V. AC - Max 300 V AC</i>
<i>Card Feeding Running Voltage</i>	<i>75 V. AC</i>
<i>Continuous Running Time with Full Load</i>	<i>7/24 Continuous</i>
<i>Running Frequency</i>	<i>50 / 60 Hz.</i>

OUTPUT PARAMETERS

<i>Corrected Output Voltage</i>	<i>200 V AC.....220 V AC.....240 V AC (Adjustable on Menu)</i>
<i>Correction Speed</i>	<i>Frequency 50 = 20ms - Frequent 60 = 50 ms</i>
<i>Output Tolerance</i>	<i>%1.....%9 (Adjustable on Menu)</i>
<i>Output Delay Time Adjustment</i>	<i>1sn.....10sn (Adjustable on Menu)</i>
<i>Output Delay Time Adjustment</i>	<i>...242 V AC Adjustable on Menu (For Guarded Models)</i>
<i>Output Lower limit Closing</i>	<i>75 V AC..... Adjustable on Menu (For Guarded Models)</i>
<i>Excessive Load</i>	<i>10 seconds on %200 Load</i>
<i>Yield</i>	<i>On %98 Full Load</i>

GENERAL PARAMETERS

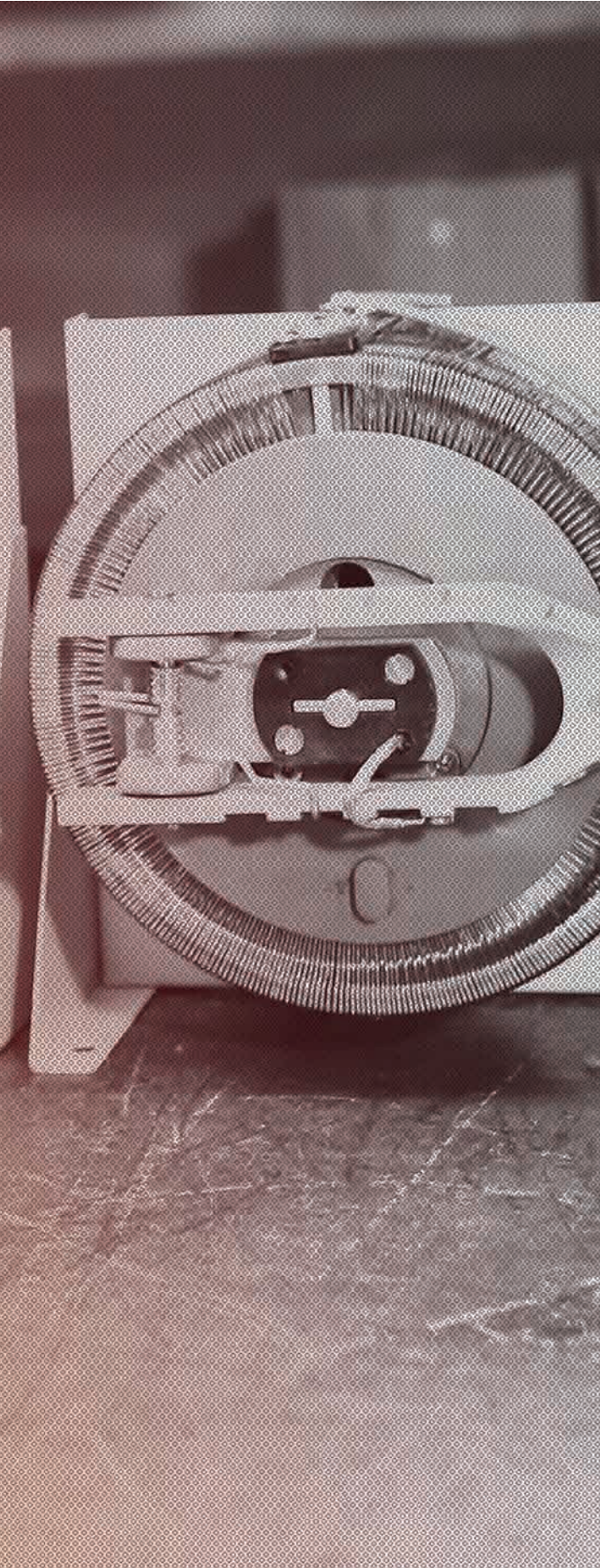
<i>Mechanic By-Pass</i>	<i>With Paco Switch</i>
<i>Automatic By-Pass</i>	<i>Optional</i>
<i>Cooling System</i>	<i>Smart Ventilator</i>
<i>Harmonic Malfunction</i>	<i>None</i>
<i>Input Voltage-Output Voltage Measuring</i>	<i>TRUE RMS (Able to Calibration on Menu)</i>
<i>Display</i>	<i>2x3 Digit Red Led Screen</i>

ÇEVRESEL KOŞULLAR

<i>Running Heat</i>	<i>-10 C / +50 C</i>
<i>Relative Humidity</i>	<i><%90 DIN</i>
<i>Running Height</i>	<i><3000 Meters</i>
<i>Acoustic Level</i>	<i><50 dB</i>

UTILIZATION AREAS

CNC Stands - Continuous Power Supply Sources - Medical Devices - Telecommunication Devices - Automation - Equipment - Wood Process Machines - Injection Machines - Press Machines - Radio Transmitters - Television Transmitters - Textile Machines - Design Machines - Navigate Equipment - Photograph Printing Machines - Elevators - Card Pass System - Laboratory Devices - Dentistry-Equipment - Laser Devices - Telephone Central Offices - Burglar Alarm Systems - Jewellery Devices - Technical Devices - Air Conditions - Motorized Shutters - Computer Systems - Lightning Units - Central Heating Boilers - Packig Machines - Leather Process Devices - Mototrized Machines - Market Equipment - Heating and Cooling System - Fire Security - Staff Attendance Control Systems - Household Electrical Appliances







THREE PHASE SERVO REGULATOR

ServoMatik three phase servo regulators are automatic regulators which regulate network voltage by variac, engine and control card. They provide secured and stable output tension in case network voltage is unstable and unsecured. They are manufactured torun without any problem even in case of full load and tension change. They demonstrate input and output in digital screens exist for each phase separately and at the same time this is a screen control card and therefore allow users change on card in case of any problem.

6kva – 3200kva

- 100 % Compatibility for all three phase devices
- Feed running for each phases at 65 V AC
- High correction range (min 175 V AC-max. 520 V AC)
- 90 V/sc voltage correction speed
- Micro processor control
- Excessive switch guard and tens'on guard (Optional)
- Short circuit guard (Optional)
- Manual By-Pass and Automatic By-Pass
- Smart Ventilator (Optional)
- Semi-Segment Display input-output and settings menu
- High efficiency
- Quality, ergonomic mold, easily carrying
- Minimum risk of fault
- ISO 9001:2008

2 YEAR
WARRANTY
GUARANTEED



INPUT PARAMETERS

<i>Input Connection Phase Number</i>	<i>3 Phase</i>
<i>Input Voltage Correction Range</i>	<i>Min. 110 V AC - Max 300 V AC</i>
<i>Card Feeding Running Voltage</i>	<i>75 V. AC (For Each Phase)</i>
<i>Continuous Running Time with Full Load</i>	<i>7/24 Continuous</i>
<i>Running Frequency</i>	<i>50/60 Hz.</i>

OUTPUT PARAMETERS

<i>Corrected Output Voltage</i>	<i>200 V AC.....220 V AC.....240 V AC (Adjustable on Menu)</i>
<i>Correction Speed</i>	<i>Frequent 50 = 20ms - Frequent 60 = 50 ms</i>
<i>Output Tolerance</i>	<i>%1.....%9 (Adjustable on Menu)</i>
<i>Output Delay Time Adjustment</i>	<i>1sn.....10sn (Adjustable on Menu)</i>
<i>Output Upper limit Closing</i>	<i>...242 V AC Adjustable on Menu (For Guarded Models)</i>
<i>Output Lower limit Closing</i>	<i>75 V AC..... Adjustable on Menu (For Guarded Models)</i>
<i>Excessive Load</i>	<i>10 seconds %200 Load</i>
<i>Yield</i>	<i>On %98 Full Load</i>

GENERAL PARAMETERS

<i>Mechanic By-Pass</i>	<i>With Paco Switch</i>
<i>Automatic By-Pass</i>	<i>Optional</i>
<i>Cooling System</i>	<i>Smart Ventilator</i>
<i>Harmonic Malfunction</i>	<i>None</i>
<i>Input Voltage-Output Voltage Measuring</i>	<i>TRUE RMS (Able to Calibration on Menu)</i>
<i>Display</i>	<i>2x3 2x3 Digit Red Led Screen</i>

ENVIRONMENTAL CONDITIONS

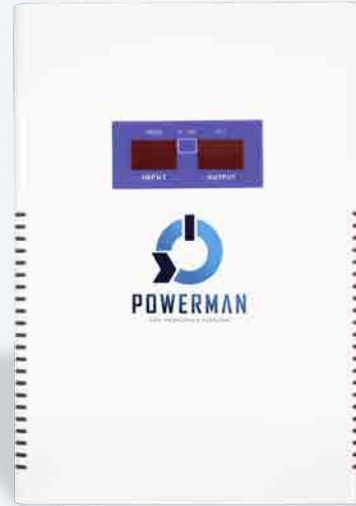
<i>Running Heat</i>	<i>-10 C / +50 C</i>
<i>Relative Humidity</i>	<i><%90 DIN</i>
<i>Running Height</i>	<i><3000 Meters</i>
<i>Acoustic Level</i>	<i><50 dB</i>

UTILIZATION AREAS

CNC Stands - Continuous Power Supply Sources - Medical Devices - Telecommunication Devices - Automation - Equipment - Wood Process Machines - Injection Machines - Press Machines - Radio Transmitters - Television Transmitters - Textile Machines - Design Machines - Navigate Equipment - Photograph Printing Machines - Elevators - Card Pass System - Laboratory Devices - Dentistry-Equipment - Laser Devices - Telephone Central Offices - Burglar Alarm Systems - Jewellery Devices - Technical Devices - Air Conditions - Motorized Shutters - Computer Systems - Lightning Units - Central Heating Boilers - Packig Machines - Leather Process Devices - Mototrized Machines - Market Equipment - Heating and Cooling System - Fire Security - Staff Attendance Control Systems - Household Electrical Appliances







RELAY REGULATORS

Servo-Matik Relay Monophase Regulators are manufactured on a compact and simple mold to be used on household devices or few power devices. They allow your few power devices to run safe and productive by its wide adjustment area and voltage guard. They provide fast level pass, do not feel voltage waving of your devices by its micro processor mold card. Its output opening time could be programmed by the button on it.

2 kva – 5 kva

- Monophase 1 phase input 1 phase output
- Correction range (min 80 V - max. 280 V AC)
- 90 V/sc voltage correction speed
- 220 V AC $\pm 2\%$ $\pm 6\%$ output sensitivity
- > 97% uninterrupted yield
- Micro Processor Technology
- 12 Graded Static Mold
- Input and Output Indicator with Semi-Segment Display
- Opening and closing time adjustment by the button on it Osc.....300sc
- Quality, compact, easily carrying
- Color match with white objects
- Minimum risk of fault
- ISO 9001:2008

2 YEAR
WARRANTY
GUARANTEED







COMBI REGULATOR

Servo- Matik combi regulators are made of compact and simple mold designed privately for electrical devices with combies and other low power electrical devices. Especially it removes late heating and whole heating problems caused by voltage lowness and provide full running for combies. They include very fast regulation speed, short circuit guard, excessive load guard, low tension - high tension guard feature by its micro processor control card. You can connect your devices easily by its plug - in cable on input and by socket on output. You can guard your devices against voltage fluctuations so that they will run with more efficiency and be long- lasting.

- Monophase 1 phase input 1 phase output
- Correction range (min 130 V -max. 260 V AC)
- 220 V AC $\pm 2\%$ output sensitivity
- > 97% uninterrupted yield
- Micro Processor Technology
- Low/High tension guard
- Automatic tension regulation
- Compact Design, Short circuit and excessive load guard
- Quality, compact, easily carrying
- Color match with white objects
- Minimum risk of fault
- ISO 9001:2008

2 YEAR
WARRANTY
GUARANTEED







REDRESSOR

Servo-Matik Accumulator charging redressor; is a full stabilized and automatic device which can be used as a Right flow source or accumulator charging device. Instant changing outputs can be monitored by indicator on the Output dc tension and output dc flow device. It prepares accumulators for your needs in case of emergency by its fast charging feature. It guards your devices connected to the output and your accumulator against any possible fault with guarding short circuit by its advanced technology control card. As load and accumulator outputs are separated, it charges accumulator and provides external dc. Also it gathers accumulators an redressor in our Bar Type models under same filed and can provide dc power output in case of any lack of electric.

- 100 % compatibility with all DC devices and accumulators
- Semi-conductive (Thyristor) control
- Flow and tension regulation
- Isolation thyristor ignition method
- Separate output for accumulator and load
- Short circuit guard
- Excessive switch guard
- High/low voltage guard
- Parallel or serial connection
- Voltmeter and ampere meter selection
- Accumulator full led
- Manual flow limitation
- Silent drop charging
- Required tension adjustment
- 100 % Performance
- Quality,ergonomic mold, small sizes, easily carrying
- ISO 9001:2008

2 YEAR
WARRANTY
GUARANTEED



INPUT PARAMETERS

<i>Input Connection Phase Number</i>	<i>1 Phase</i>
<i>Input Voltage Correction Range</i>	<i>Min. 180 V AC - Max 250 V AC (For Single Phase)</i>
<i>Card Feeding Running Voltage</i>	<i>14 V. AC</i>
<i>Continuous Running Time with Full Load</i>	<i>7/24 Continuons</i>
<i>Running Frequency</i>	<i>50/60 Hz.</i>

OUTPUT PARAMETERS

<i>Output Tension</i>	<i>110 V. AC</i>
<i>Output Flow</i>	<i>100 A</i>
<i>Tension Regulation</i>	<i>+ - %1</i>
<i>Wavy Factor</i>	<i>< %3</i>
<i>Yield</i>	<i>%90</i>
<i>Short Circuit Guard</i>	<i><1,25 ms</i>

GENERAL PARAMETERS

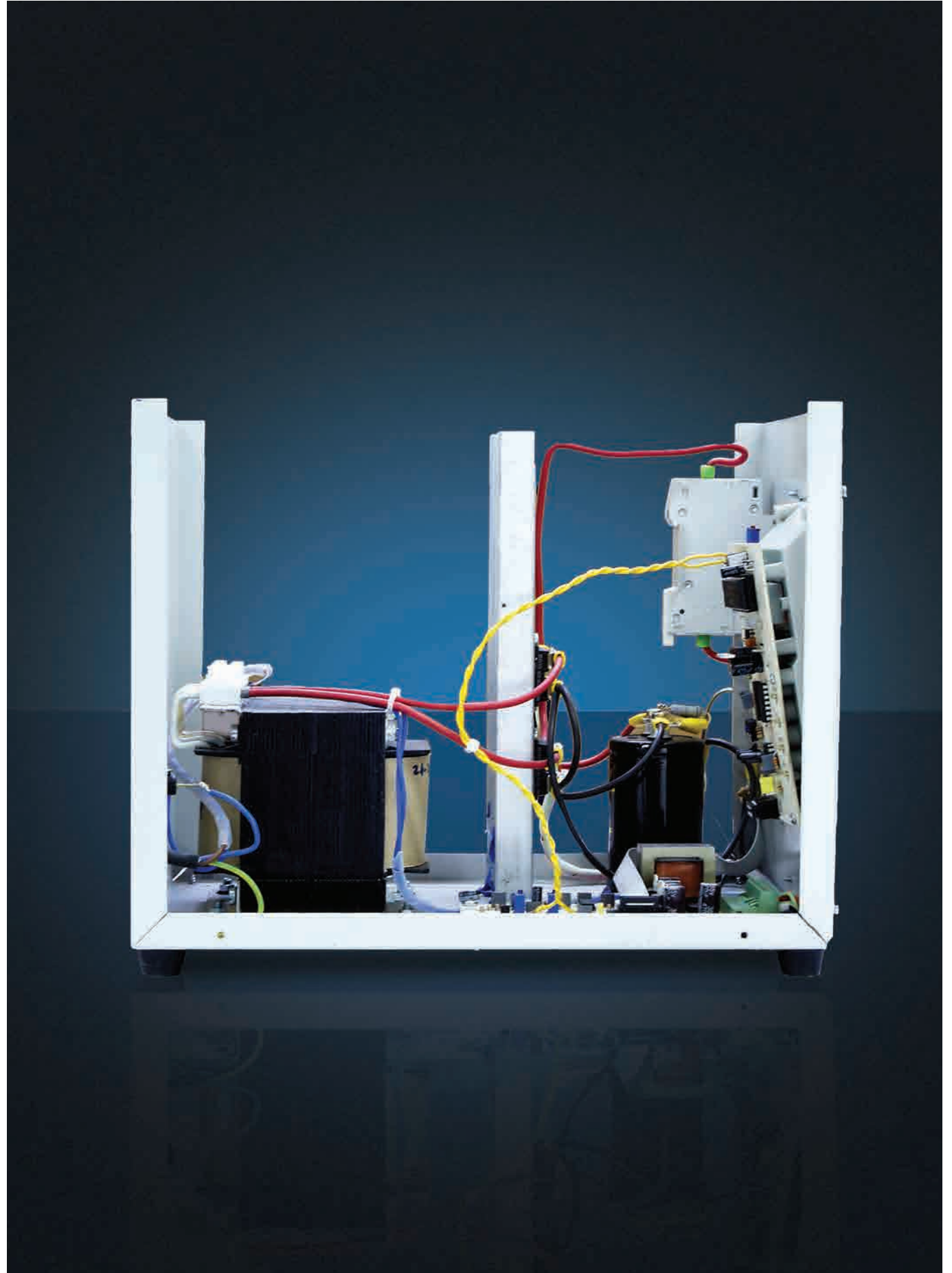
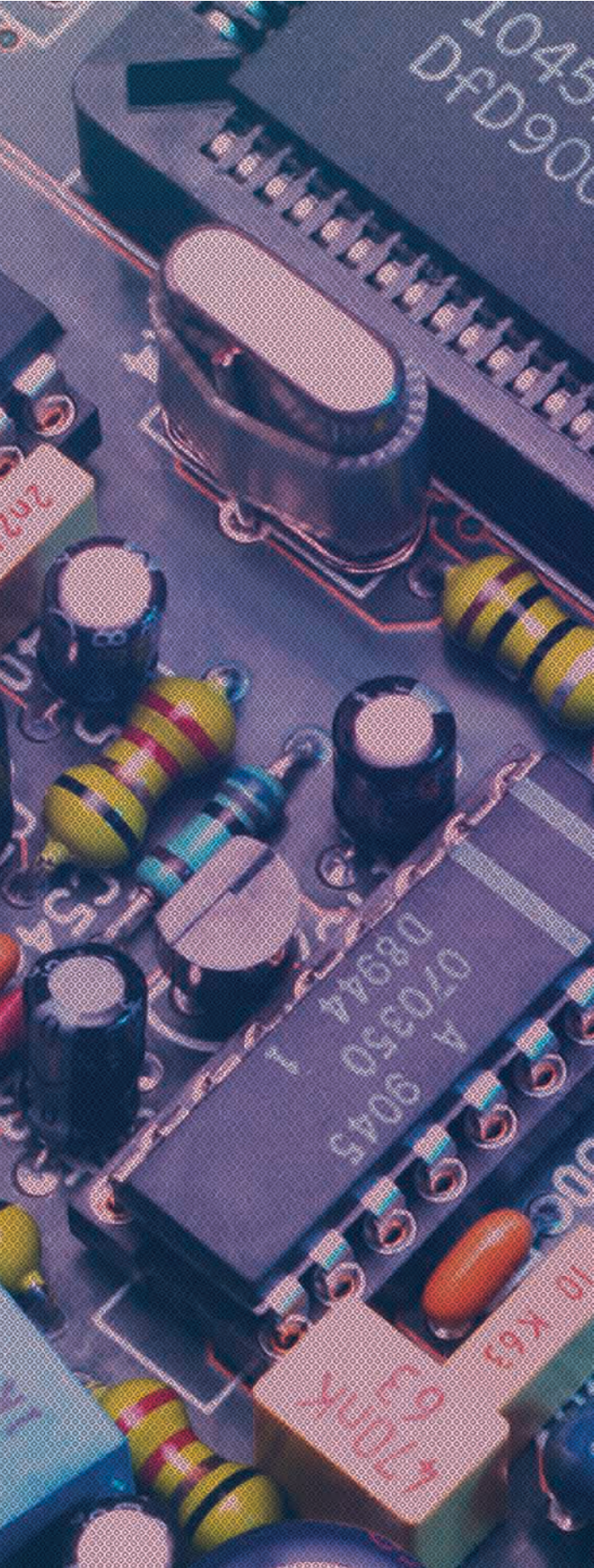
<i>Cooling System</i>	<i>Natural Convection</i>
<i>Transformation Type</i>	<i>GFTD silinca sheet metal 2A/mm2 flow density isolation B</i>
<i>Display</i>	<i>Led Display</i>
<i>Display Details</i>	<i>Voltmeter - Ampere meter</i>

ENVIRONMENTAL CONDITIONS

<i>Running Heat</i>	<i>-10 C / +50 C</i>
<i>Relative Humidity</i>	<i><%90 DIN</i>
<i>Running Height</i>	<i><3000 Meters</i>
<i>Acoustic Level</i>	<i><50 dB</i>

UTILIZATION AREA

Energy backup devices –Security device –Urgent lightning systems –Pipelines –Cathodic guard –Transformed central offices – Computer power plants – –Production lines –Dc Choppers –Invertorsfeeding –Covering by Electrolyze – Accumulator charging – Dc engine control –Cleaning materialsGenerators







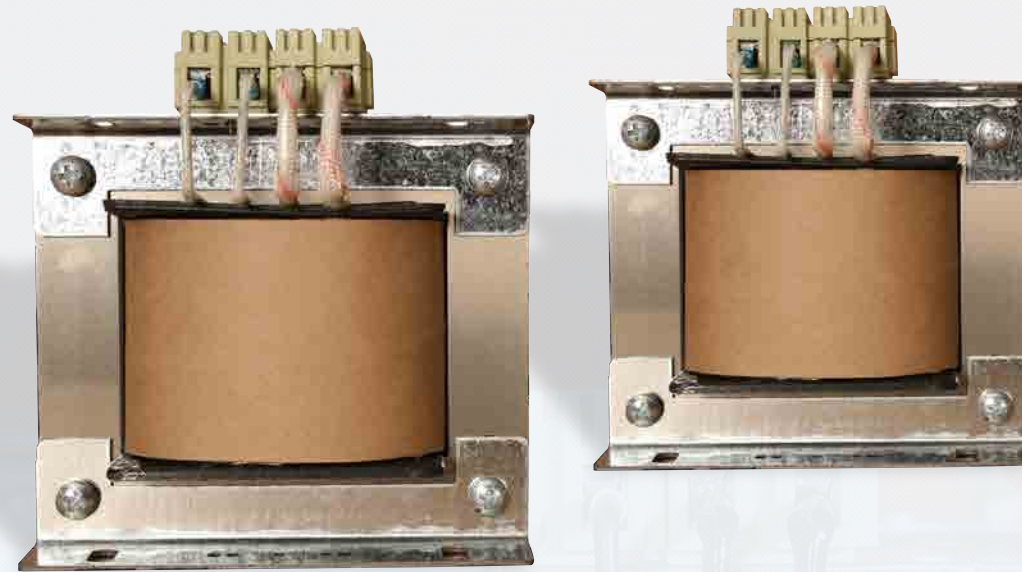
VARIAC WITH BOX

Within the adjustment range determined in accordance with customer requirements, it allows users adjust required voltage manually or by servo engine. The variac in it is formed by covering of single bandaged enamel copper wire on toroidal sheet metal core. Variac provides the power and whole load which provide voltage adjustment. Input voltage, output voltage and with box. Also PEA-72-01 card automatically records highest and lowest numbers of the values which are monitored instantly and can reset as per order.

- Digital input-output voltmeter
- Digital ampere meter
- Recording highest and lowest visible values
- Resetting information
- Input-output volt and ampere calibration
- 0-300 Volt wide voltage range (on monophase)
- Born connector or socket outlet
- Simple running by plug-in cable on input
- V-automat for guarding
- High efficiency silent running
- Manual or automatic adjustment
- Quality, ergonomic mold, easily carrying parts
- ISO 9001:2008

2 YEAR
WARRANTY
GUARANTEED





MONOPHASE TRANSFORMER

Dry-type monophane designed for general use is a security and isolation type transformer. It is used for the purpose of voltage transformation requirement or making insulation. It is an effective defense tool in case of permanent damages on human body or accidents causing death as a result of electric shock. Bandages and bandages internuclear isolation value is rather high; consequently it is short-term high power proof. It is manufactured in different powers and voltages considering customer demands.

- Mono Phase-E sheet metal 30VA ... 15 kVA / U sheet metal :10000VA ... 50kVA
- Short circuit guard/unguarded security transformer
- <1000 VAC input tension
- <1000 VAC output tension
- Frequency 50/60 Hz
- 1,8 W/kg lossy 0,50mm siliceous lamination
- Copper Electrolytic enamel magnet wire
- Transformer connection clip
- Thermic guard or interior plate glass insurance in case of excessive heat (optional)
- 0-2000 m running height
- -20 OC ... +55 OC running ambient temperature

2 YEAR
WARRANTY
GUARANTEED







THREEPHASE TRANSFORMER

They are dry-type three phase security and isolation type transformers designed for general use. They are used for voltage transformation of isolation making purposes. It is an effective defense tool in case of permanent damages on human body or accidents causing death as a result of electric shock. Bandages and bandages internuclear isolation value is rather high; consequently it is short-term high power proof. It is manufactured in different powers and voltages considering customer demands.

- Three phase – 500 VA ... 1250 kVA
- Short circuit guarded/unguarded security transformer
- Triangle-star input-output connection type
- <1000 VAC input tension
- < 1000 VAC output tension
- Frequency 50/60 Hz
- 1,8 W/kg lossy 0,50mm siliceous lamination
- Copper Electrolytic enamel magnet wire
- Transformer connection clip
- Thermic guard or interior plate glass insurance in case of excessive heat (optional)
- 0 – 2000 m running height
- 20 OC ... + 55 OC running ambient temperature

2 YEAR
WARRANTY
GUARANTEED



CHOOSE US SAY....



ING  BANK

 İNKILÂP


nursace



 özyurtlar

 Şahinler


Shell

 TEB

 yurtiçikargo

ACIBADEM

Not



SERVO-MATIK